



QT EcoSEPARATE Separating Fire Wall Panel

QT Systems

PO Box 6249 Acacia Ridge DC Q 4110 Australia

Ph: +61 7 3272 3424 Fx: +61 7 3272 3406



Figure 2.4 (c) - Junction to External Wall (Plan View)

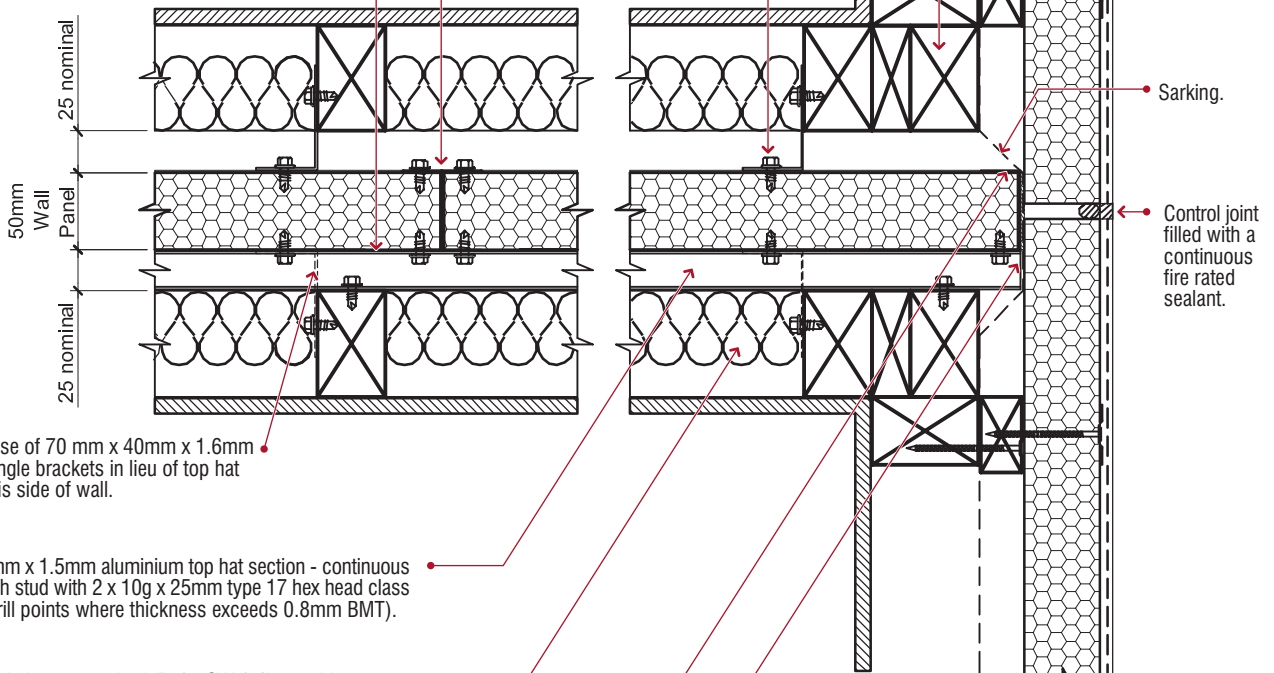
QT®EcoSeries Wall Panel or a masonry veneer external wall.

Timber or steel framing in accordance with BCA and AS 1684 or AS/NZS4600.

70mm x 40mm x 1.6mm aluminium angle bracket fixed to each stud and to channels with 2 x 10g x 25mm type 17 hex head class 3 screws (Drill points where thickness exceeds 0.8mm BMT).

Every joint on this side of the separating wall (as shown in Figure 3.2c) is to be completely sealed with an approved fire rated/acoustically rated sealant. (Side opposite aluminium top hat sections).

QT®EcoSEPARATE Fire Panel with prefixed 50mm galvanized (Z450) channels.



OPTIONAL use of 70 mm x 40mm x 1.6mm aluminium angle brackets in lieu of top hat section to this side of wall.

25mm x 67mm x 1.5mm aluminium top hat section - continuous - fixed to each stud with 2 x 10g x 25mm type 17 hex head class 3 screws (Drill points where thickness exceeds 0.8mm BMT).

Acoustic insulation as required (Refer SW-3.1) to achieve sound transfer requirements. Where insulation is required, completely and tightly fill stud cavity. Ensure insulation is friction fitted or stapled within the stud cavity.

53 x 20 x 0.75mm galvanised (Z450) channel fixed to each top and bottom plate and panel capping with 10g x 16mm wafer head self drilling screws on both sides to form a continuous surround to QT®EcoSEPARATE Wall.

Any gap between a separating wall and external wall must be no more than 50mm and be packed with mineral fibre or other suitable fire resisting material. BCA Vol 2 - 3.7.1.8 (d) (I) & (II). Any gap up to but not exceeding 20mm may be filled with an approved fire rated/acoustically rated sealant.